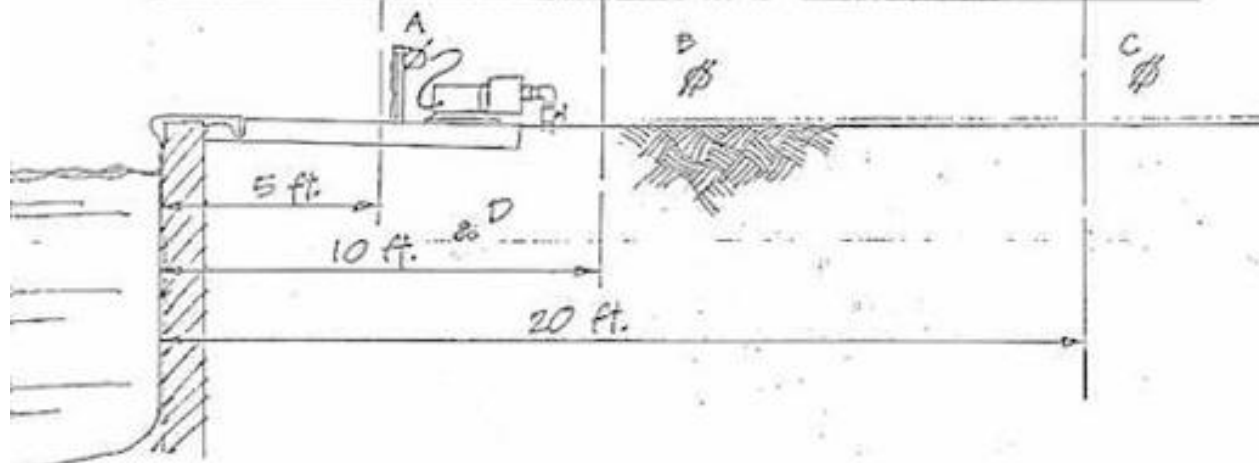


680-6 RECEPTACLES

- A = NEC Sect. 680-6(a)(1) Exception: pump motors & single twistlock receptacles on GFCI
- B = NEC Sect. 680-6(a)(2) Dwelling unit to have a GFCI recept.
- C = NEC Sect. 680-6(a)(3) No rule for over 20 ft. but see 210-8
- D = NEC Sect. 680-10 Underground wiring to be over 8 ft. from pool



5/87 RUM