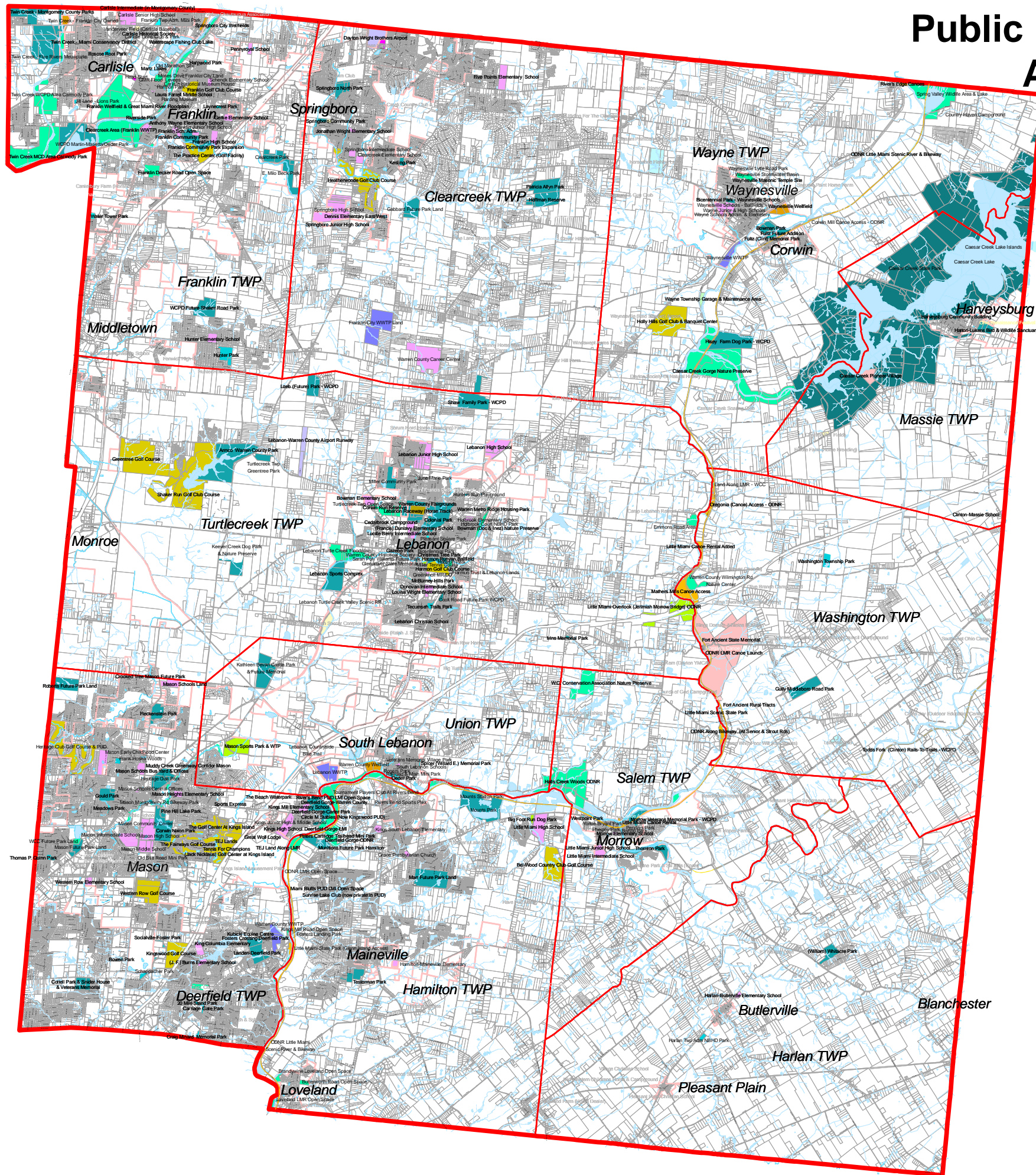


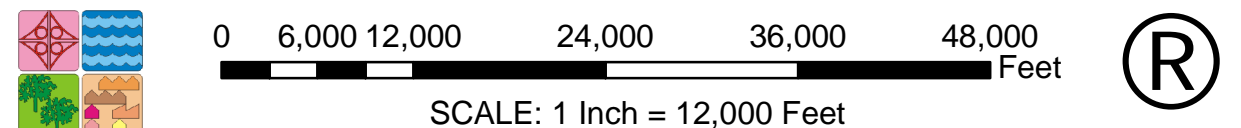
# Public Parks, Open Spaces & Assorted Recreational Areas & Facilities In Warren County, Ohio Inventoried As Of December, 2009



- County & Township Boundaries
- Roads
- Local Jurisdiction Boundaries

### TYPES OF INVENTORIED ITEMS

- AU Airports - Public Owned Open To Public
- BF Ballfields/Soccer Private Owned & Used
- BW Bikeways - Public or Private Owned - Open To Public
- CL Canoe Liveries &/or Launches - Public or Commercial
- CU Community Recreation Complex - Public Owned Open To Public
- FP Floodplain &/or Flood Protection or Drainage Control - Public Owned
- GF Golf - Future / Public or Private
- GU Golf Courses - Public Owned &/or Open To Public
- HC Historical / Cultural Site - Public or Private Owned
- HR Horse Racing Facility - Public or Commercial
- LU Lake Fishing &/or Swimming - Public Owned & Used
- MY Maintenance Yard - Public
- NP Nature Preservation - Public Owned
- OU Open Space Undeveloped - Public Owned
- PC Park - Community / Public Owned For Public Use
- PF Park - Future / Public Owned For Public Use
- PM Park - Mini / Public Owned For Public Use
- PN Park - Neighborhood / Public Owned For Public Use
- PR Park - Regional or State / Public Owned For Public Use
- PS Park - Special Area or Sports Facility / Public Owned For Public Use
- RS Railway - Scenic / Historical
- SB School Ballfields / Public or Private Owned & Used
- SF School - Future Site / Public or Private Owned
- SL School - Land Undeveloped or Open / Public or Private Owned
- SR Scenic River / Public Owned & Used
- SU School - Existing / Public Owned & Used
- TP Water Or Wastewater Treatment Plants / Public Owned
- WP Wellfield &/or Wellhead Protection Area / Public Owned



SOURCE: Warren County Regional Planning Commission & GIS Department